



# GMT MONTHLY MEMBERSHIP PROGRESS REPORT

Results as of: 6/30/2019

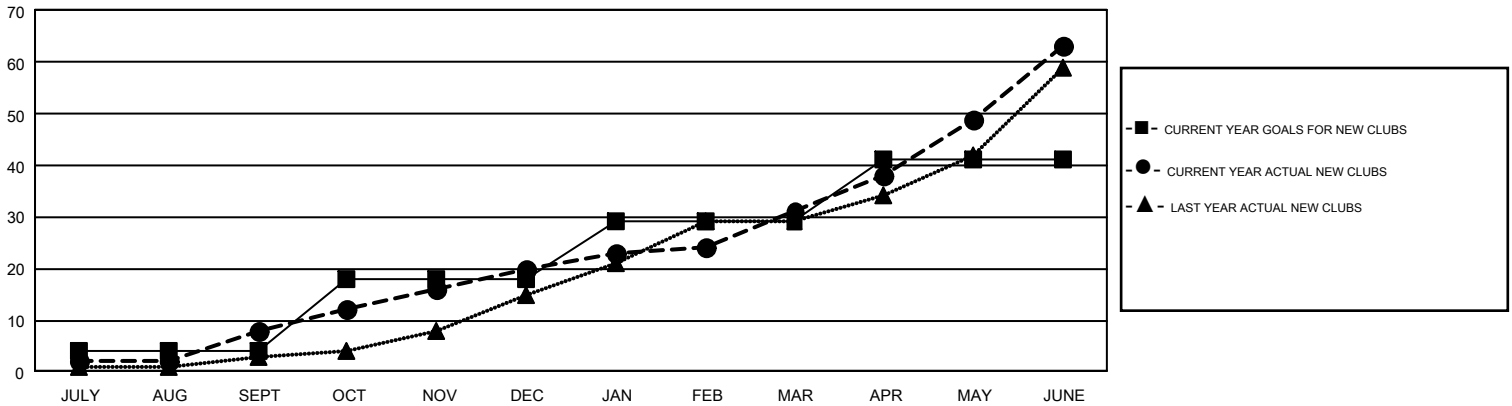
## GMT Constitutional Area 3, Group A

GMT: GERALD MORY MORA

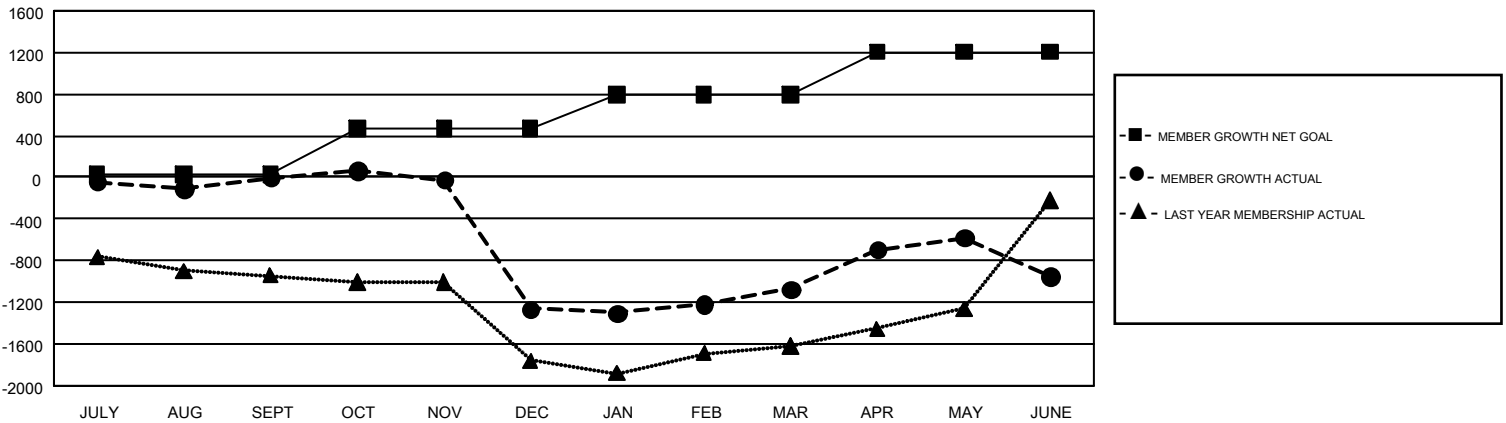
REPORT DOES NOT INCLUDE CLUBS IN UNDISTRICTED AREAS.

Clubs				Members			
RESULTS FOR 2018-2019				RESULTS FOR 2018-2019			
QUARTER	NEW CLUB GOAL	NEW CLUBS	DROPPED CLUBS	QUARTER	MEMBER GROWTH NET GOAL	MEMBER GROWTH ACTUAL	DROPPED MEMBERS ACTUAL (including transfers)
JULY/AUG/SEPT	4	8	4	JULY/AUG/SEPT	25	846	762
OCT/NOV/DEC	14	12	18	OCT/NOV/DEC	445	830	2,045
JAN/FEB/MAR	11	11	5	JAN/FEB/MAR	322	832	575
APR/MAY/JUNE	12	32	10	APR/MAY/JUNE	414	1,916	1,700

GOALS AND ACTUAL NEW CLUBS CUMULATIVE



GOALS AND ACTUAL MEMBERS CUMULATIVE



DROPPED CLUBS: 37	615 CLUBS OF 1,007 ADDED 1 OR MORE NEW MEMBERS	<b>GENDER DISTRIBUTION</b>
<b>DROPPED MEMBERS</b>	<a href="#">CLICK HERE FOR CUMULATIVE MEMBERSHIP DATA</a>	MALE            13,082 (52.15%)
DECEASED            178		FEMALE        12,004 (47.85%)
CLUB CANCELLED      534		TOTAL FAMILY UNIT MEMBERS            7,646
OTHER                    4,367		FAMILY MEMBERS PAYING HALF DUES            4,413
<b>TOTAL                    5,079</b>		